

ONE-PIECE STAINLESS STEEL 6" SMASHED BURGER PRESS WITH HEAT-RESISTANT SILICONE SLEEVE

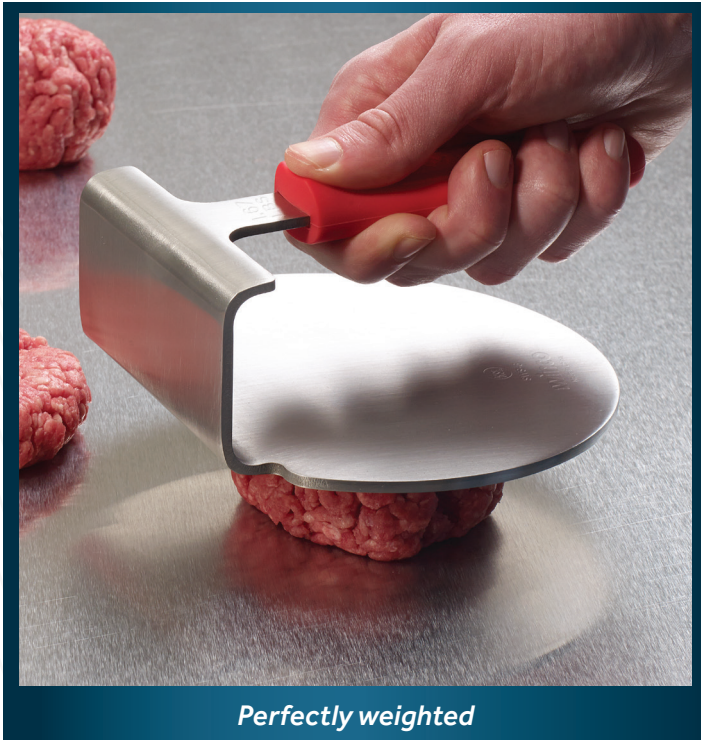
SWS-6



Deliver maximum crispy crust and ultimate flavor every time.

PRODUCT FEATURES

- Lock in the flavor and deliver "smashed burger crust"
- Easy-clean unique one-piece design
- Press burgers to uniform thickness for quicker cook time, even and consistent texture
- Removable silicone sleeve is heat-resistant up to 450°F (230°C)



Perfectly weighted



ITEM	DESCRIPTION	UOM	CASE
SWS-6	6" Dia, One-Pc S/S	Each	12