

Howard - McCray

OPEN MERCHANDISERS 30E SERIES – 44" HIGH ENDLESS DESIGN - MULTI-PURPOSE



| MODEL NO. | DESCRIPTION | LENGTH | DEPTH | HEIGHT | VOLTAGE | AMPS | HP/BTUS | POWER CORD | EST. SHIP WEIGHT |
|-------------|-------------------------------|--------|-------|--------|---------|------|---------|------------|------------------|
| SC-OS30E-3C | Self contained Curved Plexi | 39 | 30" | 44" | 115 | 12.0 | 1/2 | 5-15P | 445 |
| SC-OS30E-4C | Self contained Curved Plexi | 51 | 30" | 44" | 115 | 13.1 | 1/2 | 5-20P | 475 |
| SC-OS30E-5C | Self contained Curved Plexi | 63 | 30" | 44" | 115 | 16.0 | 3/4 | 5-20P | 500 |
| SC-OS30E-6C | Self contained Curved Plexi | 75 | 30" | 44" | 115 | 16.0 | 3/4 | 5-20P | 525 |
| SC-OS30E-3 | Self contained Straight Plexi | 39 | 30" | 44" | 115 | 12.0 | 1/2 | 5-15P | 445 |
| SC-OS30E-4 | Self contained Straight Plexi | 51 | 30" | 44" | 115 | 13.1 | 1/2 | 5-20P | 475 |
| SC-OS30E-5 | Self contained Straight Plexi | 63 | 30" | 44" | 115 | 16.0 | 3/4 | 5-20P | 500 |
| SC-OS30E-6 | Self contained Straight Plexi | 75 | 30" | 44" | 115 | 16.0 | 3/4 | 5-20P | 525 |
| R-OS30E-3C | Remote Curved Plexi | 39 | 30" | 44" | 115 | 0.7 | 3100 | NO | 401 |
| R-OS30E-4C | Remote Curved Plexi | 51 | 30" | 44" | 115 | 1.4 | 4133 | NO | 428 |
| R-OS30E-5C | Remote Curved Plexi | 63 | 30" | 44" | 115 | 1.4 | 5165 | NO | 450 |
| R-OS30E-6C | Remote Curved Plexi | 75 | 30" | 44" | 115 | 1.4 | 6200 | NO | 473 |
| R-OS30E-3 | Remote Straight Plexi | 39 | 30" | 44" | 115 | 0.7 | 3100 | NO | 401 |
| R-OS30E-4 | Remote Straight Plexi | 51 | 30" | 44" | 115 | 1.4 | 4133 | NO | 428 |
| R-OS30E-5 | Remote Straight Plexi | 63 | 30" | 44" | 115 | 1.4 | 5165 | NO | 450 |
| R-OS30E-6 | Remote Straight Plexi | 75 | 30" | 44" | 115 | 1.4 | 6200 | NO | 473 |

MODEL NUMBER PREFIX - SC = Self Contained R = Remote
 MODEL NUMBER SUFFIX - W = White B = Black S = Stainless Steel LED = LED lighting
 • Cases are designed to operate at 75 degrees Fahrenheit and 55% relative humidity
 • Cases are equipped with drains; check your local building codes for connection requirements.
 • Specification subject to change without notice
 IF COLORS ARE MIXED AN ADDITIONAL CHARGE WILL APPLY



OPEN MERCHANDISERS 30E SERIES – 44" HIGH – ENDLESS DESIGN - MULTI-PURPOSE



STANDARD SPECIFICATIONS AND OPTIONAL FEATURES

CONSTRUCTION

- UL Classified to ANSI/NSF 7
- Foamed in place CFC free foam
- Heavy gauge steel super structure
- Endless design allows for continuous line up

INTERIOR

- White, black, or stainless steel end panels
- Removable white, black, or stainless steel floor pans
- White, black, or stainless steel perforated rear wall (for even air distribution)
- Step shelves
- Electric condensate pan - 200 Watt

EXTERIOR

- White, black, or stainless steel ends and front
- White, black, or stainless steel color band
- Removeable front grill allows for cleaning and servicing
- 1" bumper
- Choice of end panels Curved or Straight plexi
- Night cover standard

FINISHES

- White, black, or stainless steel end panels
- White, black, or stainless steel front rail
- White, black, or stainless steel front color band
- White, black, or stainless steel end trim
- Laminate, and custom paints available

ELECTRICAL REQUIREMENTS

- Cord and Plug
- 3' 115V, 5-15P
- 4', 5', 6' 115V, 5-20P
- See Tech page for details on voltage

REFRIGERATION

- Low velocity fans located below deck area (to insure even flow of air)
- Electronic Control System with automatic air defrost to Maintain Balanced Temperatures
- New high efficiency air screen technology
- Self contained system
- Copeland hermetic unit
- Remotes available

OPTIONAL FEATURES

- LED lights at top of the unit
- Security cover (Straight)
- Insulated divider for line ups
- Plexiglas divider for line ups
- Stainless steel, laminated or paint
- Colored bumper
- 2 Different end panel choices
- Digital thermometer

IMPORTANT NOTE:

ALL REFRIGERATED CASES ARE DESIGNED TO OPERATE IN AN ENVIRONMENT OF 75 DEGREES AND 55% RELATIVE HUMIDITY.

PRODUCT MUST BE COOLED BEFORE BEING DISPLAYED WITHIN THE CASE.

DRAIN IS REQUIRED

OPEN MERCHANDISERS 30E SERIES – 44" HIGH – ENDLESS DESIGN - MULTI-PURPOSE



TECHNICAL DATA

| STRAIGHT SIDES MODEL NO. | SC | SC-OS30E-3 | SC-OS30E-4 | SC-OS30E-5 | SC-OS30E-6 |
|---|-------------|----------------------------|----------------------------|----------------------------|----------------------------|
| | R | R-OS30E-3 | R-OS30E-4 | R-OS30E-5 | R-OS30E-6 |
| CURVED SIDES MODEL NO. | SC | SC-OS30E-3C | SC-OS30E-4C | SC-OS30E-5C | SC-OS30E-6C |
| | R | R-OS30E-3C | R-OS30E-4C | R-OS30E-5C | R-OS30E-6C |
| Length with (2) ends | | 39" | 51" | 63" | 75" |
| Length without ends | | 36" | 48" | 60" | 72" |
| Height with ends | | 44" | 44" | 44" | 44" |
| Height without ends | | 43-7/8" | 43-7/8" | 43-7/8" | 43-7/8" |
| Depth with ends | | 30" | 30" | 30" | 30" |
| Depth without ends | | 29" | 29" | 29" | 29" |
| Endless design (Dimensions are +/- 1/4") | | YES | YES | YES | YES |
| Operating temperature | | 36°F to 40°F | 36°F to 40°F | 36°F to 40°F | 36°F to 40°F |
| Compressor size HP | SC | 1/2 | 1/2 | 3/4 | 3/4 |
| Defrost per day (24 hours) | Air Defrost | 6 per day | 6 per day | 6 per day | 6 per day |
| BTU's at +20°F Evap. Temp. | R | 3100 | 4133 | 5165 | 6200 |
| Voltage | SC | 115 | 115 | 115 | 115 |
| Amperage | SC | 12.0 | 13.1 | 16.0 | 16.0 |
| Remote Voltage | R | 115 | 115 | 115 | 115 |
| Amperage, fans only | R | 0.7 | 1.4 | 1.4 | 1.4 |
| Cord and plug | SC | 5-15P | 5-20P | 5-20P | 5-20P |
| | R | NO | NO | NO | NO |
| Exterior color | | W, B, S | W, B, S | W, B, S | W, B, S |
| Interior color | | W, B, S | W, B, S | W, B, S | W, B, S |
| # of shelves | | 1 | 1 | 1 | 1 |
| Shelves | | Step shelf (2) 7" depth | Step shelf (2) 7" depth | Step shelf (2) 7" depth | Step shelf (2) 7" depth |
| Shipping Info | | | | | |
| Height | | 49" | 49" | 49" | 49" |
| Depth | | 44" | 44" | 44" | 44" |
| Length | | 49" | 61" | 72" | 87" |
| Gross weight SC / R | | 445/401 | 475/428 | 500/450 | 525/473 |
| Cubic feet | | 61 | 76 | 91 | 108 |

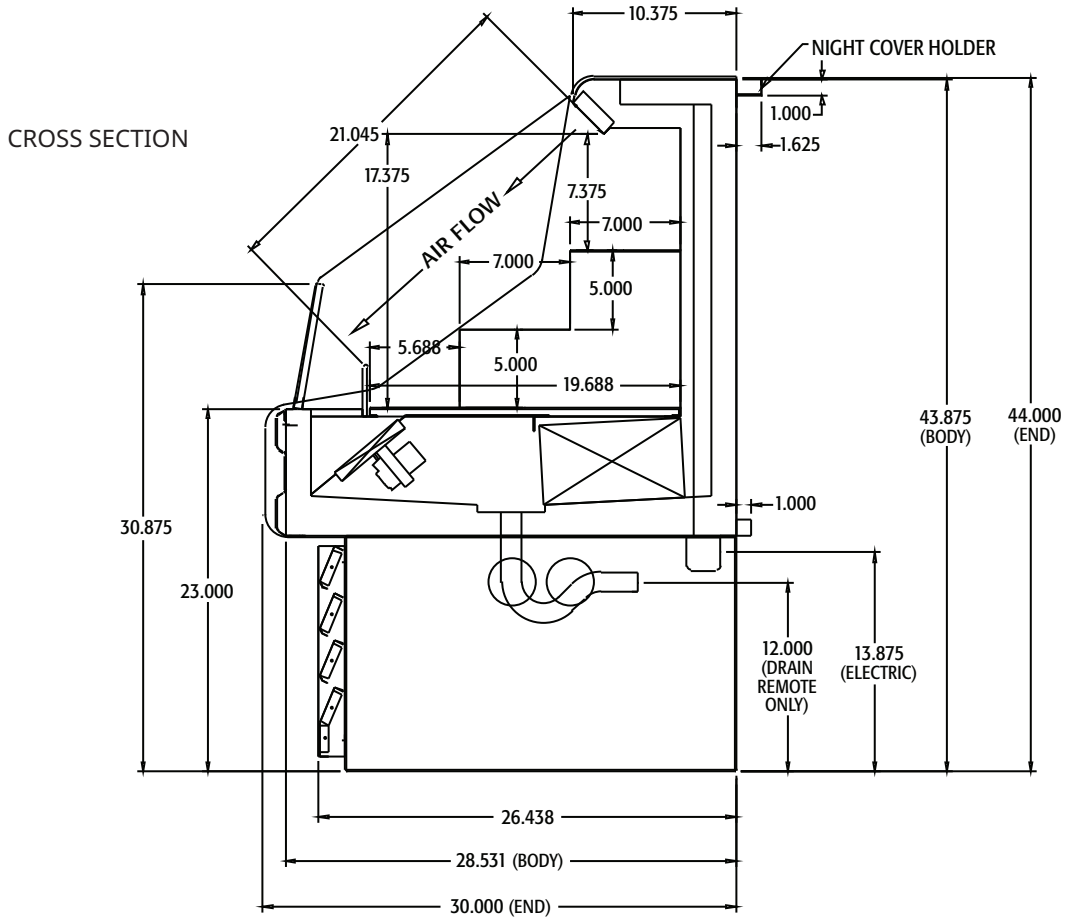
(ALL WHITE OR ALL BLACK, NO EXTRA CHARGE—IF COLORS ARE MIXED AN ADDITIONAL CHARGE WILL APPLY)

| Prefix | Suffix |
|---------------------|----------------------|
| SC = Self Contained | B = Black |
| R = Remote | W = White |
| | SS = Stainless Steel |
| | LS = Lit Shelving |
| | LED = LED lighting |

- Cases are designed to operate at 75 degrees Fahrenheit and 55% relative humidity
- Cases are equipped with drains; check your local building codes for connection requirements.
- Specification subject to change without notice

OPEN MERCHANDISERS
30E SERIES - 44" HIGH - ENDLESS DESIGN - MULTI-PURPOSE

DRAWINGS • CROSS SECTION • PLAN VIEW



PLAN VIEW

