



Equipment for the Foodservice Industry

value + quality + service

STAINLESS STEEL DROP IN SINKS



STAINLESS STEEL DROP IN SINKS

Features

Features:

- All sink bowls have a large liberal radius
- Rectangular in design for increased capacity
- Stainless steel basket drain with a 1 ½" IPS
- 4" center faucet holes
- All TIG welded
- Welded areas are blended to a satin finish to match adjacent surfaces
- One sheet of stainless steel means no seams
- Heavy gauge Type 304 stainless steel
- Faucet supply is 1 1/12" IPS male thread hot and cold
- Specifications subject to change without notice.

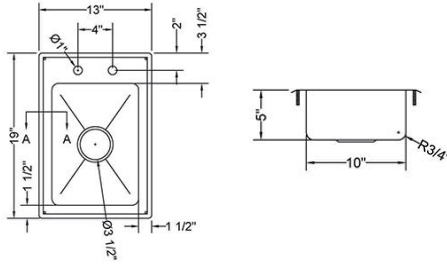
DROP IN SINK ACCESSORIES

Product #	Description	Shipping Dimensions			Weight (lbs)
		W"	D"	H"	
SIH-FD	Faucet for drop in sink	9	5	3	2

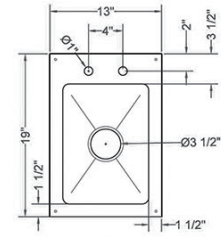


STAINLESS STEEL DROP IN SINKS

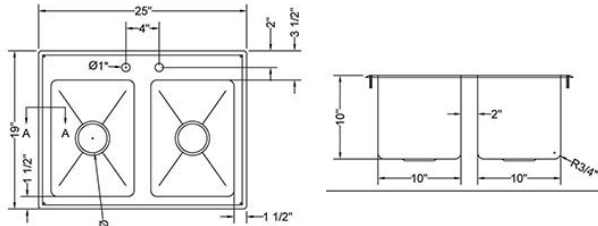
Features



SIHD819-5



SIHD819-10

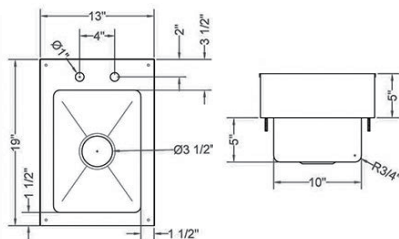


SIHD819-10-2

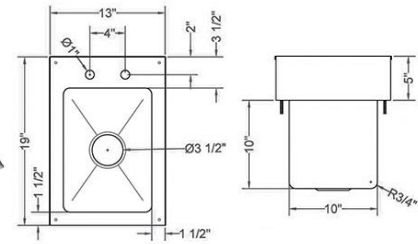


STAINLESS STEEL DROP IN SINKS

Product #	Description	Shipping Dimensions			Weight (lbs)
		W"	D"	H"	
SIHD819-5	Drop in sink 5" depth bowl	13	19	5	10
SIHD819-10	Drop in sink 10" depth bowl	13	19	10	12
SIHD819-10-2	Drop in sink with 2 fabricated bowls	25	19	10	21



SIHD819-5-S



SIHD819-10-S



STAINLESS STEEL DROP IN SINKS with SPLASH GUARD

Product #	Description	Shipping Dimensions			Weight (lbs)
		W"	D"	H"	
SIHD819-5-S	Drop in sink 5" depth bowl w/ splash guard	13	19	5	10
SIHD819-10-S	Drop in sink 10" depth bowl w/ splash guard	13	19	10	12



EFI Sales Ltd.
Vancouver Office
26895 Gloucester Way
Langley, BC V4W 3Y3

EFI Sales Ltd.
Toronto Office
474 Attwell Drive
Toronto, ON M9W 5C3

Distribution Facilities:
Langley, BC
Toronto, ON

(604) 607-8850 Vancouver
(416) 798-7776 Toronto
(888) 565-9920 Toll Free
(604) 607-8820 Fax
info@efifoodequip.com