

Clean Dishtables

Designed for Left or Right Side Configurations, in 3 Lengths



- Designed for right or left configuration
- 18 gauge stainless steel construction
- Hand formed and hand welded
- Galvanized gusset and legs
- Durable stainless steel 1" adjustable bullet feet
- Wall mounting brackets included
- 30" width; available lengths: 24", 36", 48"
- Backsplash is 8" high with 20" opening for dishwashers
- Slanted top edge polished smooth
- 1-1/2" diameter rolled corner edge around the front and side
- NSF listed



REL-CDT24L	- 30" x 24" Clean Dish Table - Left drainboard
REL-CDT24R	- 30" x 24" Clean Dish Table - Right drainboard
REL-CDT36L	- 30" x 36" Clean Dish Table - Left drainboard
REL-CDT36R	- 30" x 36" Clean Dish Table - Right drainboard
REL-CDT48L	- 30" x 48" Clean Dish Table - Left drainboard
REL-CDT48R	- 30" x 48" Clean Dish Table - Right drainboard

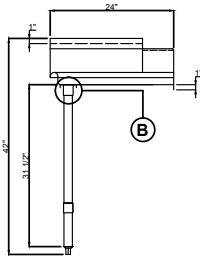
Specifications subject to change without notice.

**Refer to the following pages
for drawings and dimensions**

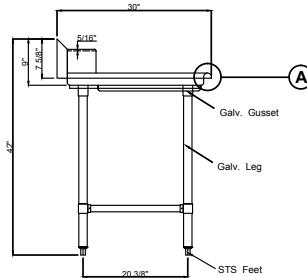
Clean Dishtables

Designed for Left or Right Side Configurations, in 3 Lengths

REL-CDT24L

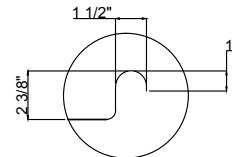


FRONT ELEVATION

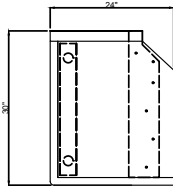


SIDE VIEW

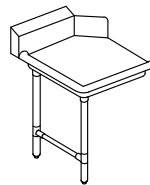
- 18 GA. STAINLESS STEEL CONSTRUCTION.
- GALV. GUSSET AND GALV. LEG AND STAINLESS FEET
- WALL CLIP.



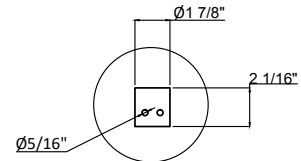
DETAIL "A"



PLAN VIEW

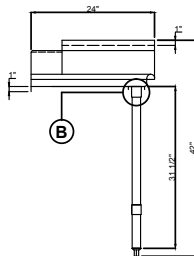


ISOMETRIC

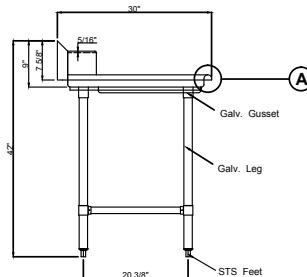


DETAIL "B"

REL-CDT24R

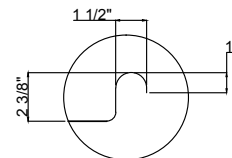


FRONT ELEVATION

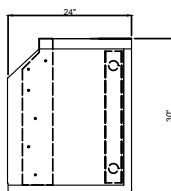


SIDE VIEW

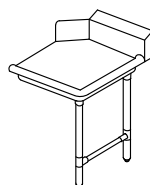
- 18 GA. STAINLESS STEEL CONSTRUCTION.
- GALV. GUSSET AND GALV. LEG AND STAINLESS FEET
- WALL CLIP.



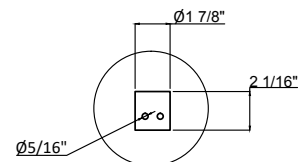
DETAIL "A"



PLAN VIEW

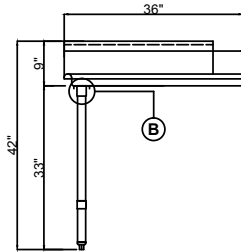


ISOMETRIC

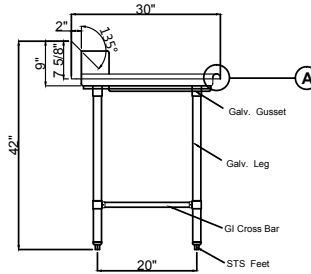


DETAIL "B"

REL-CDT36L

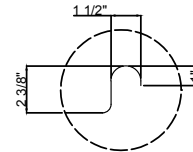


FRONT ELEVATION

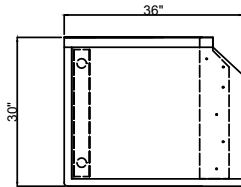


SIDE VIEW

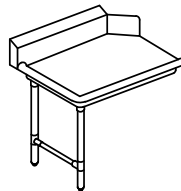
- 16 GA. STAINLESS STEEL CONSTRUCTION.
- GALV. GUSSET AND GALV. LEG AND STAINLESS FEET



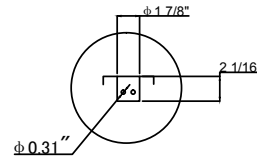
DETAIL "A"



PLAN VIEW

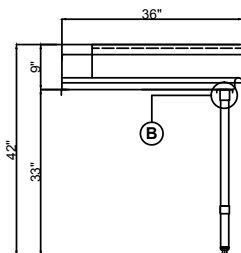


ISOMETRIC

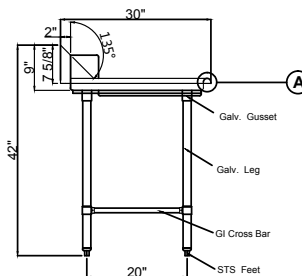


DETAIL "B"

REL-CDT36R

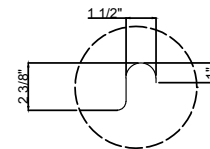


FRONT ELEVATION

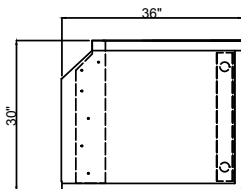


SIDE VIEW

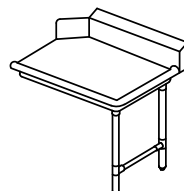
- 16 GA. STAINLESS STEEL CONSTRUCTION.
- GALV. GUSSET AND GALV. LEG AND STAINLESS FEET



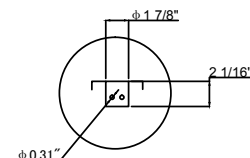
DETAIL "A"



PLAN VIEW

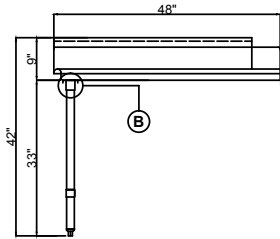


ISOMETRIC

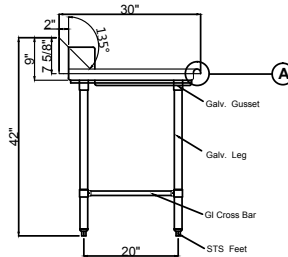


DETAIL "B"

REL-CDT48L

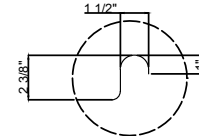


FRONT ELEVATION

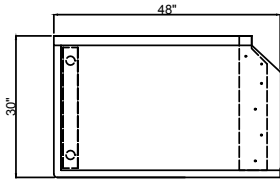


SIDE VIEW

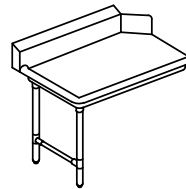
- 16 GA. STAINLESS STEEL CONSTRUCTION.
- GALV. GUSSET AND GALV. LEG AND STAINLESS FEET



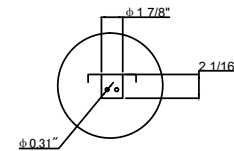
DETAIL "A"



PLAN VIEW

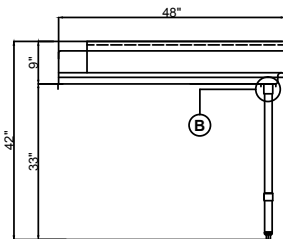


ISOMETRIC

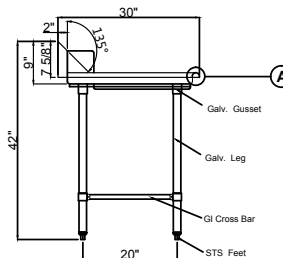


DETAIL "B"

REL-CDT48R

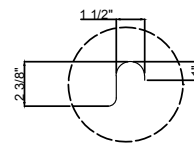


FRONT ELEVATION

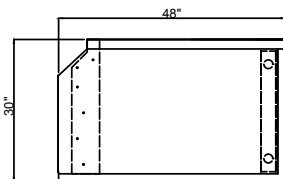


SIDE VIEW

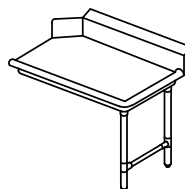
- 16 GA. STAINLESS STEEL CONSTRUCTION.
- GALV. GUSSET AND GALV. LEG AND STAINLESS FEET



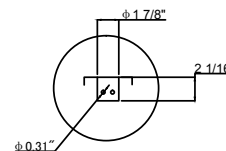
DETAIL "A"



PLAN VIEW

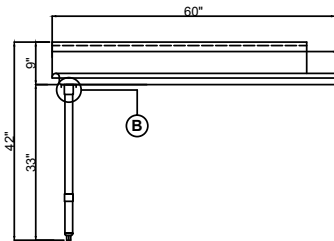


ISOMETRIC

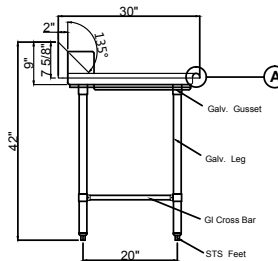


DETAIL "B"

REL-CDT60L

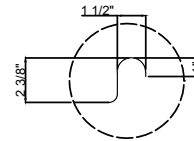


FRONT ELEVATION

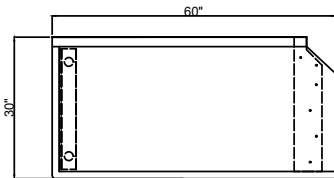


SIDE VIEW

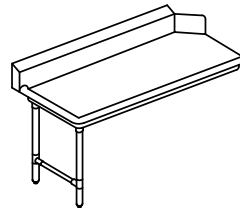
- 16 GA. STAINLESS STEEL CONSTRUCTION.
- GALV. GUSSET AND GALV. LEG AND STAINLESS FEET



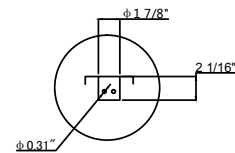
DETAIL "A"



PLAN VIEW

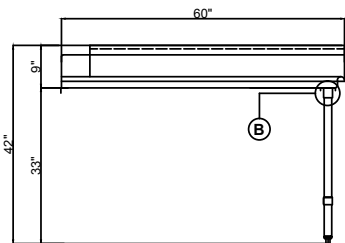


ISOMETRIC

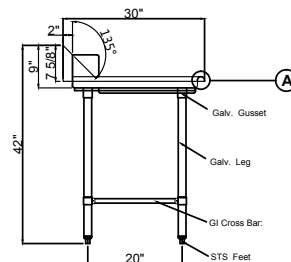


DETAIL "B"

REL-CDT60R

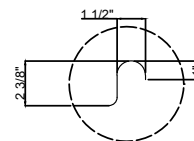


FRONT ELEVATION

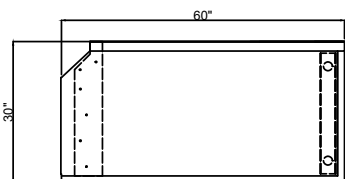


SIDE VIEW

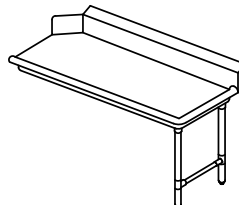
- 16 GA. STAINLESS STEEL CONSTRUCTION.
- GALV. GUSSET AND GALV. LEG AND STAINLESS FEET



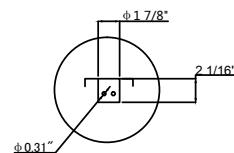
DETAIL "A"



PLAN VIEW



ISOMETRIC



DETAIL "B"